

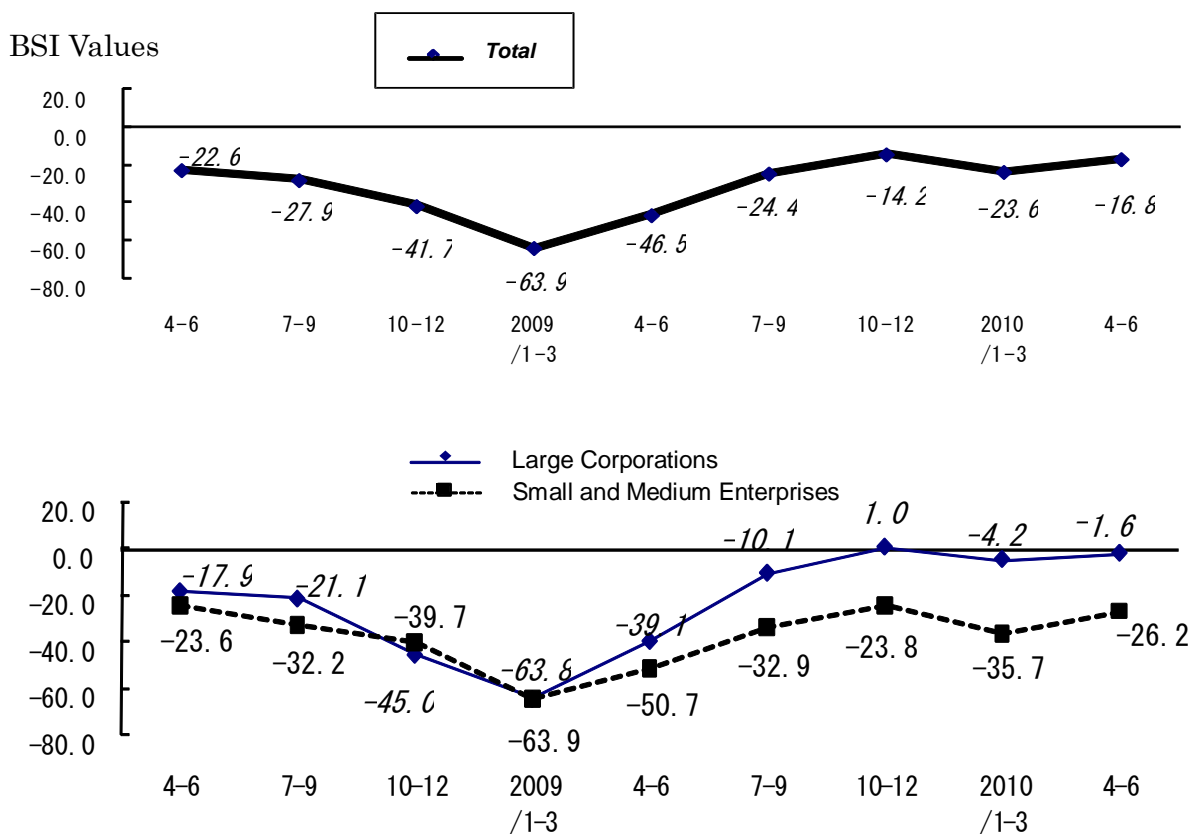
OSAKA ECONOMY

② BUSINESS TRENDS

- Survey on Business Management & Economic Trends (survey made by OCCI and Kansai Business Federation)

As of 2009.12.11

OUTLOOK ON COMPANY BUSINESS PERFORMANCES



* Actual results: For periods of 2008.4-6, 2008.7-9, 2008.10-12, 2009.1-3, 2009.4-6, 2009.7-9, 2009.10-12

* Estimates: For periods of 2010.1-3, 2010.4-6

* BSI values: (Ratio of top managers who responded with 'up' on previous period)
Minus (-) (Ratio of those who responded with 'down' on previous period)

Yearly Economic Indicators

	Kinki Region		Japan Total		Notes
	FY 2007	FY 2008	FY 2007	FY 2008	
Large Retailers Sales	4,230	4,094.10	21,252.50	20,660.30	billion yen
Construction of New Homes	-22.6	-2.5	-19.4	0.3	ratio (%) in comparison with previous year
Plant & Equipment Investment	15.3	-1.6	3.6	-6.4	ratio (%) in comparison with previous year
Public Investment	-4.9	-1	-4.1	0.1	ratio (%) in comparison with previous year
Industrial Production Index	-0.1	-9.7	2.7	-12.7	ratio (%) in comparison with previous year
Unemployment	—	—	—	—	ratio (%) in comparison with previous year
Total Exports customs-cleared	16,889.40	15,000.40	85,113.40	71,144.90	billion yen
Total Imports customs-cleared	13,242.90	12,733.80	74,958.10	71,871.60	billion yen
Consumer Prices Index	0.3	1	0.4	1.1	ratio (%) in comparison with previous year

(Sources: Data from Kinki Bureau of Economy and Industry)

(*Based on comparison with same month/previous year)

※Kinki Region: Kyoto, Osaka, Hyogo, Nara, Wakayama, Shiga and Mie

Monthly Economic Indicators for 2009

	Kinki Region					Japan					Notes
	2009.1-3	2009.4-6	2009.7-9	2009.10	2009.11	2009.1-3	2009.4-6	2009.7-9	2009.10	2009.11	
Large Retailers Sales	966.5	948.6	943.5	306.5	320.2	4910.1	4817.4	4799.1	1561.1	1622.4	billion yen
Construction of New Homes	-21.9	-32.7	-29.3	-21.2	-20.0	-21.4	-31.9	-35.8	-27.1	-19.1	ratio (%) in comparison with previous year
Plant & Equipment Investment	-2.3	-15.1	-14.1	—	—	-19.8	-17.6	-23.4	—	—	ratio (%) in comparison with previous year
Public Investment	9.6	35.5	4.9	1.6	0.8	7.8	13	11.2	8.3	0.0	ratio (%) in comparison with previous year
Industrial Production Index	-24.9	-21.0	-17.3	-12.2	-4.2	-34.6	-27.8	-20.1	-15.1	-3.9	ratio (%) in comparison with previous year
Unemployment	5	5.5	6.4	6.1	5.9	4.6	5.2	5.4	5.2	5	ratio (%) in comparison with previous year
Total Exports customs-cleared (yen)	2,548.80	2,929.20	3,193.80	1,158.70	1,052.80	11,190.50	12,815.70	14,464.60	5,308.50	4,990.60	billion yen
Total Imports customs-cleared (yen)	2,322.50	2,303.50	2,535.40	871.5	875.03	12,053.60	11,946.70	13,380.30	4,504.60	4,619.40	billion yen
Consumer Prices Index	-0.1	-0.7	-1.9	-2.2	-1.7	-0.1	-1	-2.2	-0.4	-0.2	ratio(%) in comparison with previous year

(Sources: Data from Kinki Bureau of Economy and Industry)

(*Based on comparison with same month/previous year)

※Kinki Region: Kyoto, Osaka, Hyogo, Nara, Wakayama, Shiga and Mie